

ITALY: 9 TOP SPAS IN TUSCANY AND ELSEWHERE

LUXURY SPA FINDER

THE SPA LIFESTYLE AT ITS FINEST

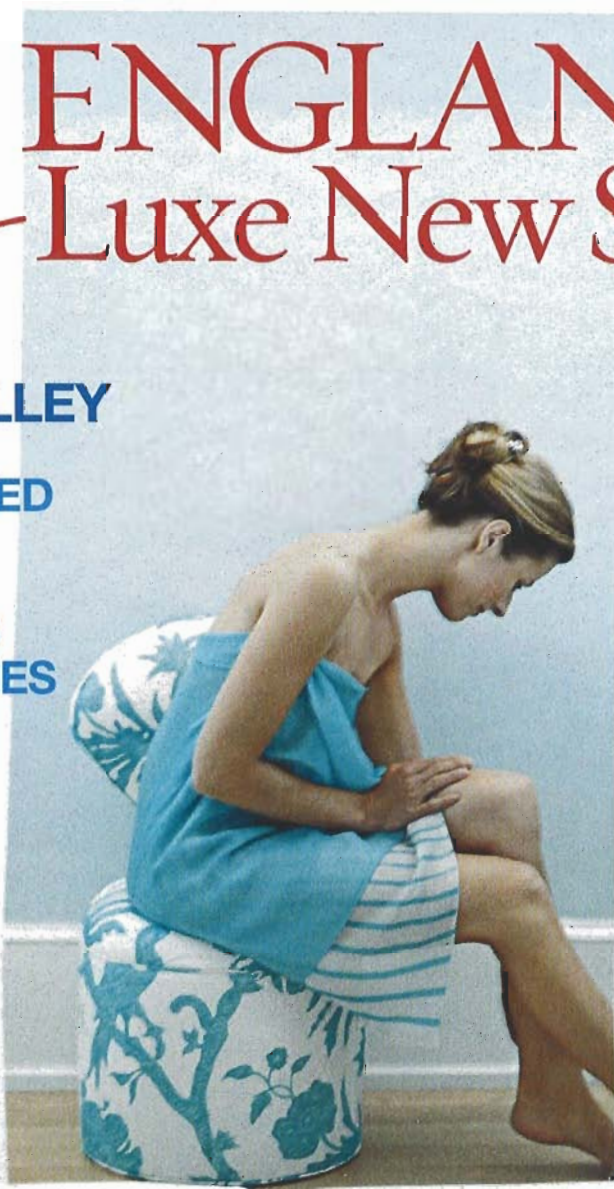
NEW ENGLAND'S Ultra-Luxe New Spa

HUDSON RIVER VALLEY
A GREAT SPA VALUE,
FALL FOLIAGE INCLUDED

THE SPA LOOK
17 SILK SEPARATES
AND ACCESSORIES

THE CARIBBEAN
LITTLE MUSTIQUE'S
BIG MYSTIQUE

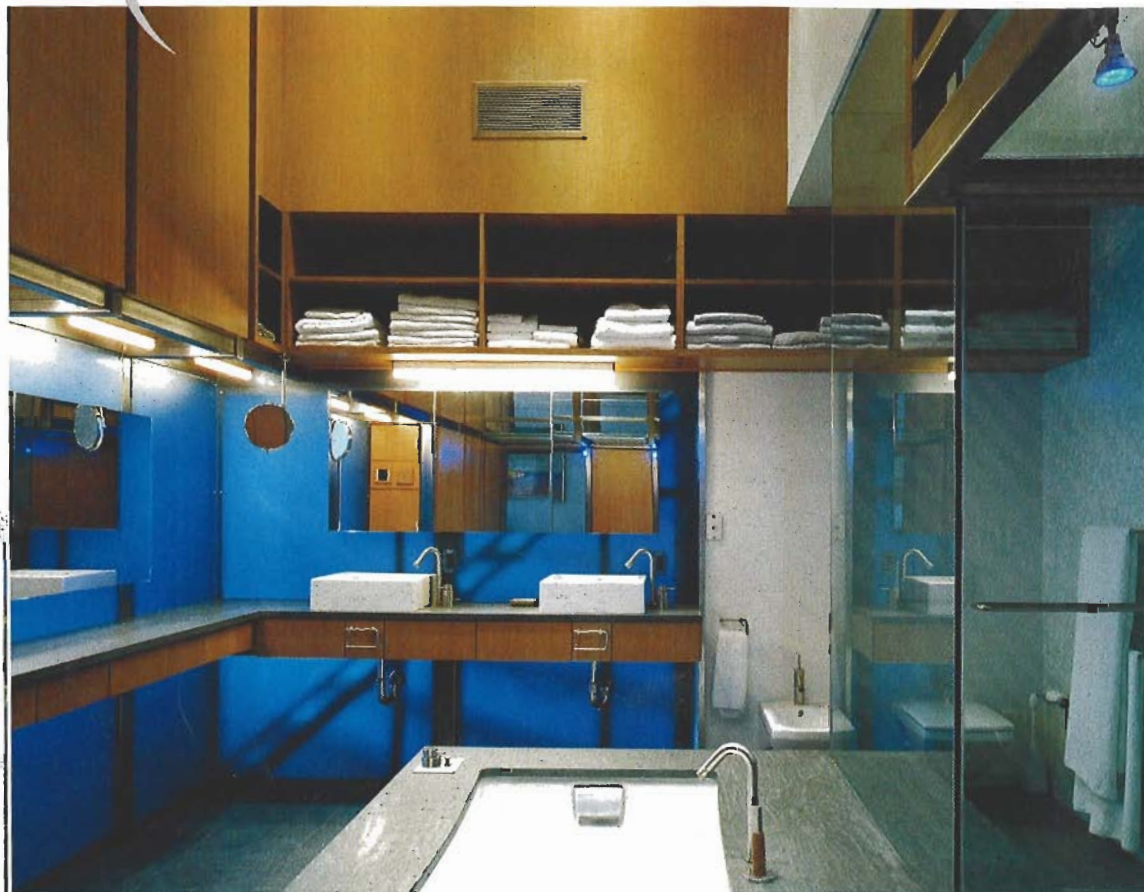
SPA BEAUTY
5 ALL-STAR
ALL-NATURAL
PRODUCTS



*****AUTO**3-DIGIT 303 PS 2 9

LEAH PETERSON
KLEBER & ASSOCIATES
1215 HIGHTOWER TRL BLDG C
ATLANTA GA 30350-6253

HOME SPA DESIGN



designer showcase

EACH SURFACE HAS ITS OWN DISTINCT language," Eric Liftin, the principal at Mesh Architectures, explains. "The selection of materials is a way of coding space, of signifying how to use it."

In which case, this master bathroom, part of a 4,500-square-foot SoHo loft, is trilingual, speaking in stone, glass, and wood.

The stone, says Liftin, is ideal for horizontal surfaces because "it's inviting to walk on and to put things on; it's a material 'at rest.'" Liftin used Pietra Cardosa, a warm, neutral gray shale-like stone for the floors, tub deck, and vanity top. In the vertical surfaces, the lingua franca is glass (including glass tile) to convey a feeling of airiness and lightness and to make the 13-foot ceilings feel even higher. The white surface behind the glass shower enclosure is also glass (a Bisazza blend), which, Liftin says, "is neutral white but has texture and more depth than glazed ceramic." Even the

room's acrylic exterior walls are translucent, allowing the profile of an exterior staircase to show behind the sinks. The oak cabinetry is "a clear invitation for storage because wood is containing and protecting." The owner's fastidiousness meant that Liftin could leave off the doors.

A Mr. Steam unit allows the shower to double as a steam room: Liftin extended the tub decking into the shower space so the owners could sit while steaming. The Kohler Tea-for-Two tub is perfect for long, languid soaks.

Despite using multiple vocabularies, Liftin conveys a clear message: Minimalism isn't a process of subtraction. The surfaces in this room are rich and tactile, there's visual intrigue and depth, and while the look is pared down, it's anything but one-note. —A.B.

Mesh Architectures, 180 Varick St., New York, NY, 212-989-3884, www.mesh-arc.com

PRODUCT SOURCES

Flooring, tub top, and countertops

Artistic Tile Pietra Cardosa, from \$31.70 per square foot, www.artistictile.com



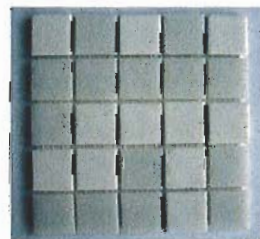
Tub fills

Boffi Minimal Collection, \$2,220, www.boffi-la.com



Shower tile

Bisazza Ghiaccio, from \$10.80 per square foot, www.bisazzausa.com



Tub

Kohler Tea-for-Two 6-foot bath, from \$2,981, www.kohler.com

